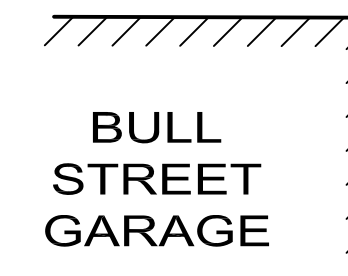
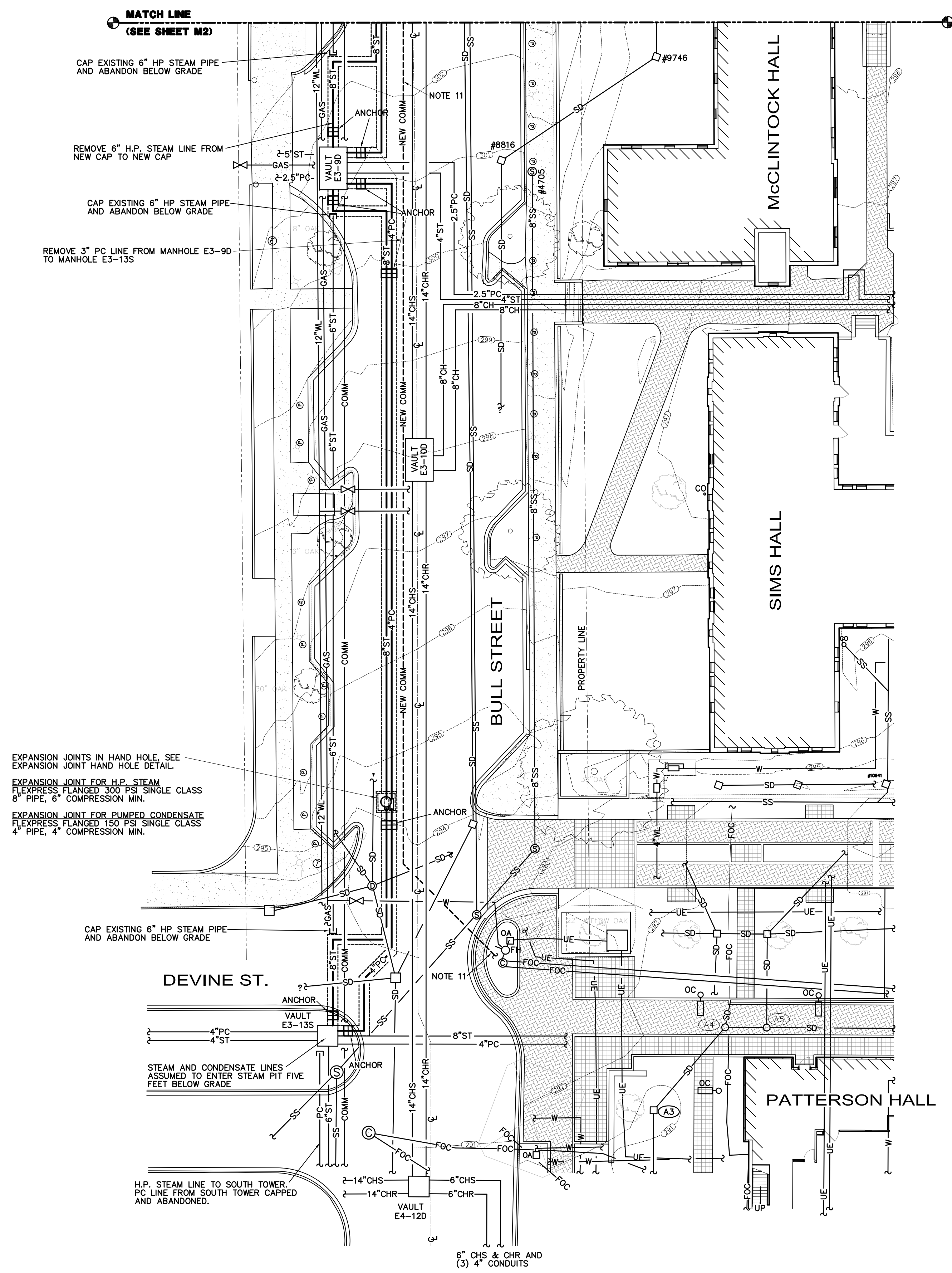


GENERAL NOTES

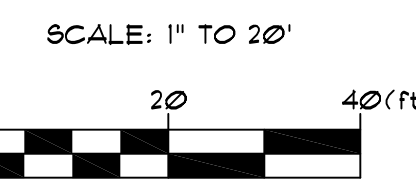
- DO NOT SCALE DRAWINGS. VERIFY ALL REQUIRED INFORMATION IN FIELD BY VISITING SITE PRIOR TO SUBMITTING BID.
- DIMENSIONS ARE IN INCHES UNLESS OTHERWISE NOTED.
- WHENEVER THE WORD "PROVIDE" IS USED IT SHALL MEAN FURNISH AND INSTALL COMPLETE AND READY FOR USE.
- ALL OPENINGS THRU EXISTING STRUCTURES SHALL BE CORE DRILLED.
- PROVIDE ALL ITEMS OF MISCELLANEOUS STEEL AS REQUIRED FOR INSTALLATION OF ALL MECHANICAL ITEMS.
- PROVIDE FOR ACCESS TO ALL MECHANICAL ITEMS REQUIRING CLEANING OR ADJUSTMENT.
- PIPING SHALL BE KEPT CLEAN OF DEBRIS DURING INSTALLATION.
- SEE SECTION 23 00 00 MECHANICAL, GENERAL FOR BACK FILLING AND PATCHING OF BITUMINOUS SURFACES.
- ALL WORK INCLUDED IN DIVISION 23 SHALL COMPLY WITH THE 2009 INTERNATIONAL BUILDING CODES.
- PROVIDE MOMENT GUIDES FOR H.P. STEAM AND PUMPED CONDENSATE INTERNATIONAL BUILDING CODES.
- ALTERNATE #1: PROVIDE (2) 4" GALVANIZED RIGID STEEL CONDUITS WITH THREADED CONNECTORS MINIMUM 36" BELOW GRADE. ALL BENDS IN CONDUITS TO HAVE 5'-0" RADIUS MINIMUM. BOTH CONDUITS TO INCLUDE LOCATABLE MULE TAPE TIED OFF AT EACH END. PROVIDE 2" THICK RIGID INSULATION COVER ON CONDUITS WHERE THEY PASS WITHIN 24" OF HIGH PRESSURE STEAM OR PUMPED CONDENSATE PIPES. APPLY INSULATION PER RIGID PIPE INSULATION IN SPECS. VERIFY EXACT LOCATION OF CONDUITS WITH USC PROJECT MANAGER.

LEGEND OF SYMBOLS

SYMBOL	DESCRIPTION
	EXISTING BUILDING
	CENTERLINE OF STREET
	EXISTING CONTOURS
	NEW H.P. STEAM LINE (100 PSIG)
	NEW PUMPED CONDENSATE LINE
	NEW TRENCH CORRIDOR
	NEW PIPE ANCHOR, SEE DETAIL
	(2) NEW 4" COMMUNICATIONS CONDUITS
	EXISTING H.P. STEAM LINE (100 PSIG)
	EXISTING PUMPED CONDENSATE LINE
	EXISTING CHILLED WATER SUPPLY PIPE
	EXISTING CHILLED WATER RETURN PIPE
	EXISTING STORM DRAIN MANHOLE
	EXISTING STORM DRAIN LINE W/CATCH BASIN
	EXISTING WATER HYDRANT
	EXISTING UNDERGROUND WATER LINE
	EXISTING WATER MANHOLE
	EXISTING SEWER LINE
	EXISTING SEWER MANHOLE
	EXISTING SANITARY SEWER LINE
	EXISTING TELEPHONE/COMMUNICATIONS MANHOLE
	EXISTING UNDERGROUND TELEPHONE
	EXISTING ELECTRIC HAND HOLE
	EXISTING ELECTRIC PEDESTAL
	EXISTING UNDERGROUND ELECTRIC
	EXISTING GAS MANHOLE
	EXISTING UNDERGROUND FIBER OPTICS CONDUIT
	EXISTING FIBER OPTICS MANHOLE/HAND HOLE
	EXISTING UNDERGROUND GAS
	EXISTING TREE
	CONNECTION FROM NEW TO EXISTING



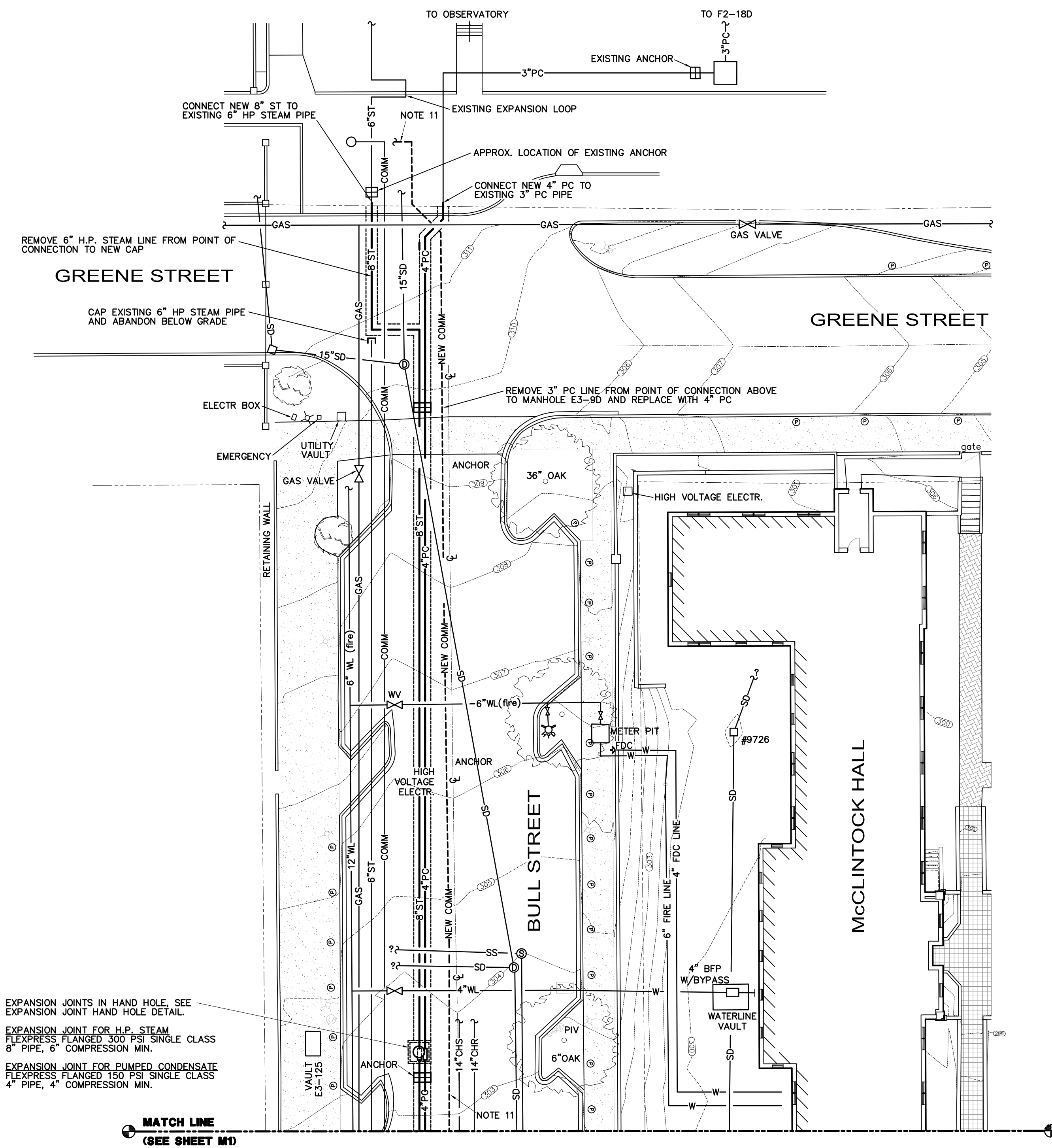
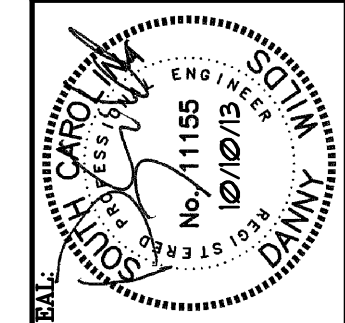
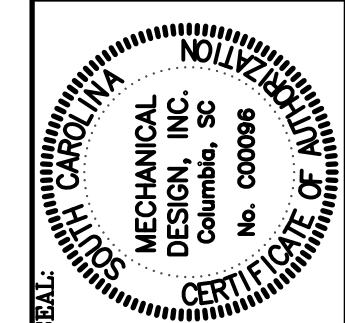
PARTIAL MECHANICAL SITE PLAN
SCALE: 1" = 20'-0"



MECHANICAL DESIGN, INC.
4403 Broad River Road
Columbia, S.C. 29210
(803) 731-9834
(803) 731-9837 FAX
CONTACT: Danny Wilds
DATE: 10/10/13 COMM. NO. 133030

REV	DESCRIPTION	DATE	ORIG. BY	DRAWN BY	CHECKED BY
1	100C113	10/10/13	CDW	CDW	CDW

PROJECT TITLE: CENTRAL STREAM/CONDENSATE LINES I
BULL STREET
State Project No. H27-N291-FW
University of South Carolina



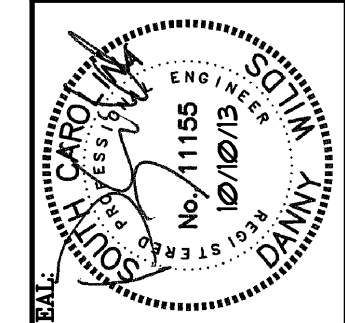
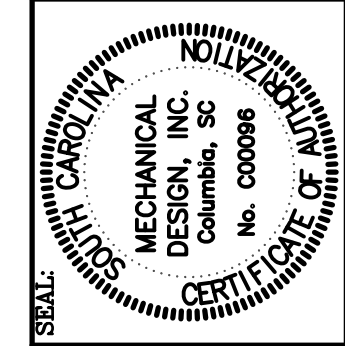
PARTIAL MECHANICAL SITE PLAN
SCALE: 1" = 20'-0"



MECHANICAL DESIGN INC.
4403 Broad River Road
Columbia, S.C. 29210
(803) 731-8834
(803) 731-9857 FAX
CONTACT: Danny Wilds
DATE: 10/10/13 COMM. NO. 133030

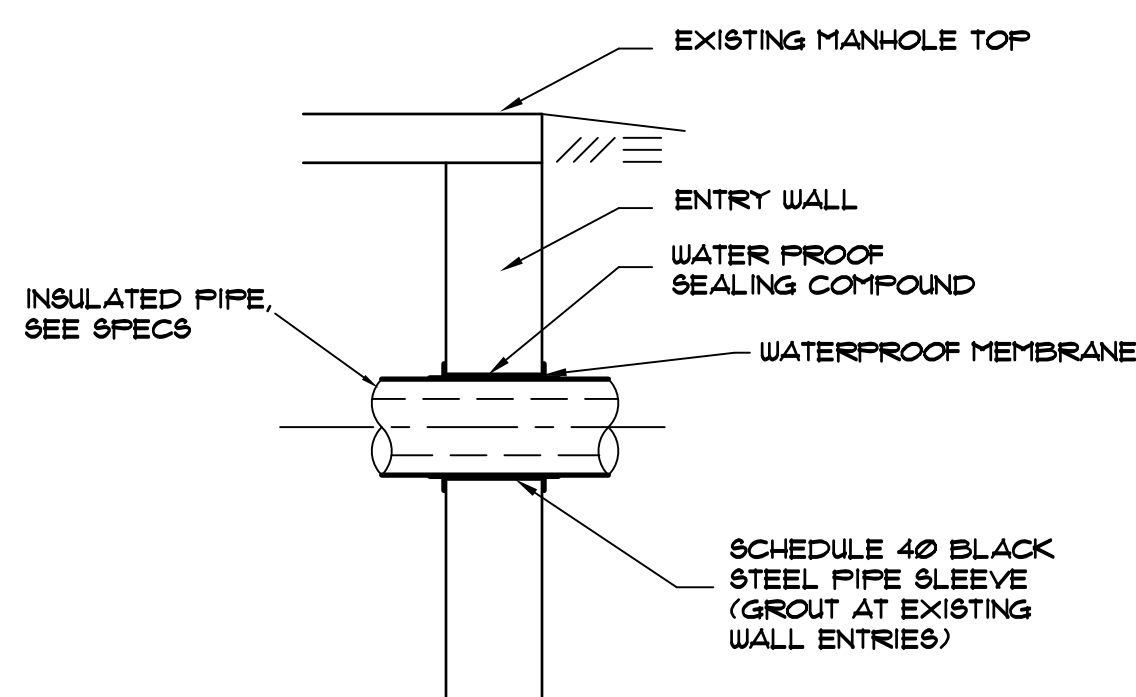
REV	DESCRIPTION	DATE	ORIG. BY	DRAWN BY	CHECKED BY
1	100CT13				CDW
2	M2-133030				CDW

PROJECT TITLE: CENTRAL STREAM/CONDENSATE LINES I
BULL STREET
State Project No. H27-N291-FW
University of South Carolina



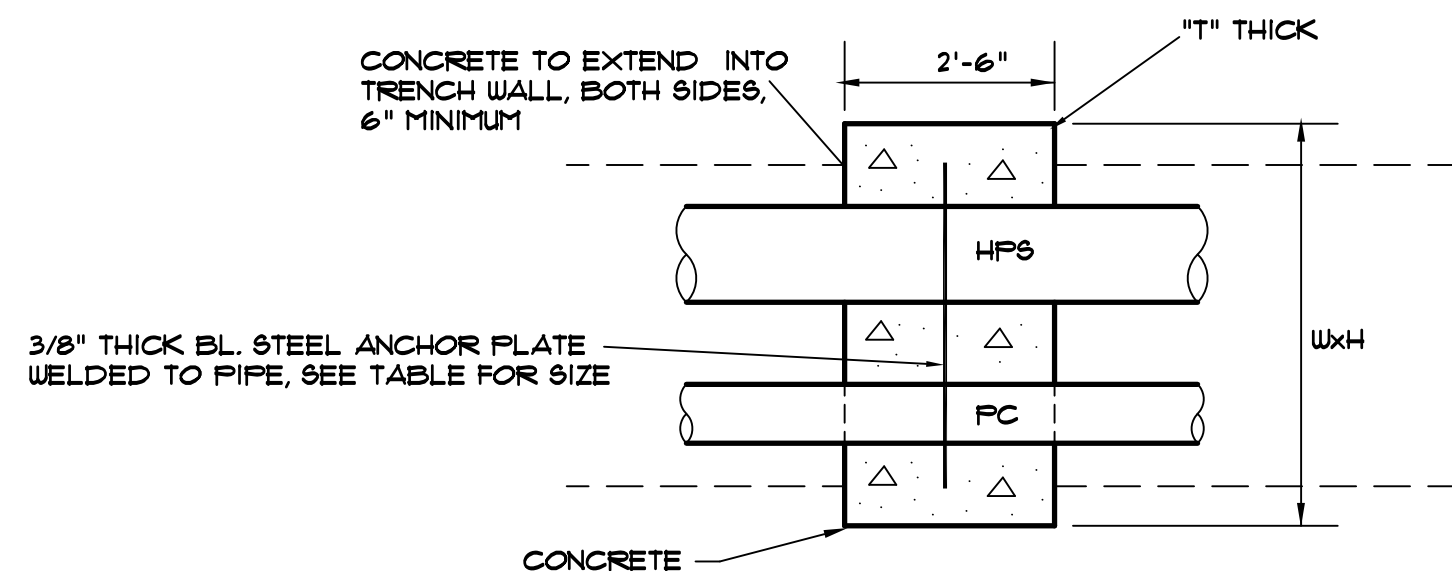
PROJECT TITLE:	CENTRAL STEAM/CONDENSATE LINES I
BUILDING:	M3-133030
DATE:	10OCT13
DESCRIPTION:	
REV:	
DRAWN BY:	CDW
CHECKED BY:	CDW
DATE:	
ORIG. BY:	

State Project No. H27-N291-FW
University of South Carolina



PIPE ENTRY DETAIL
NOT TO SCALE

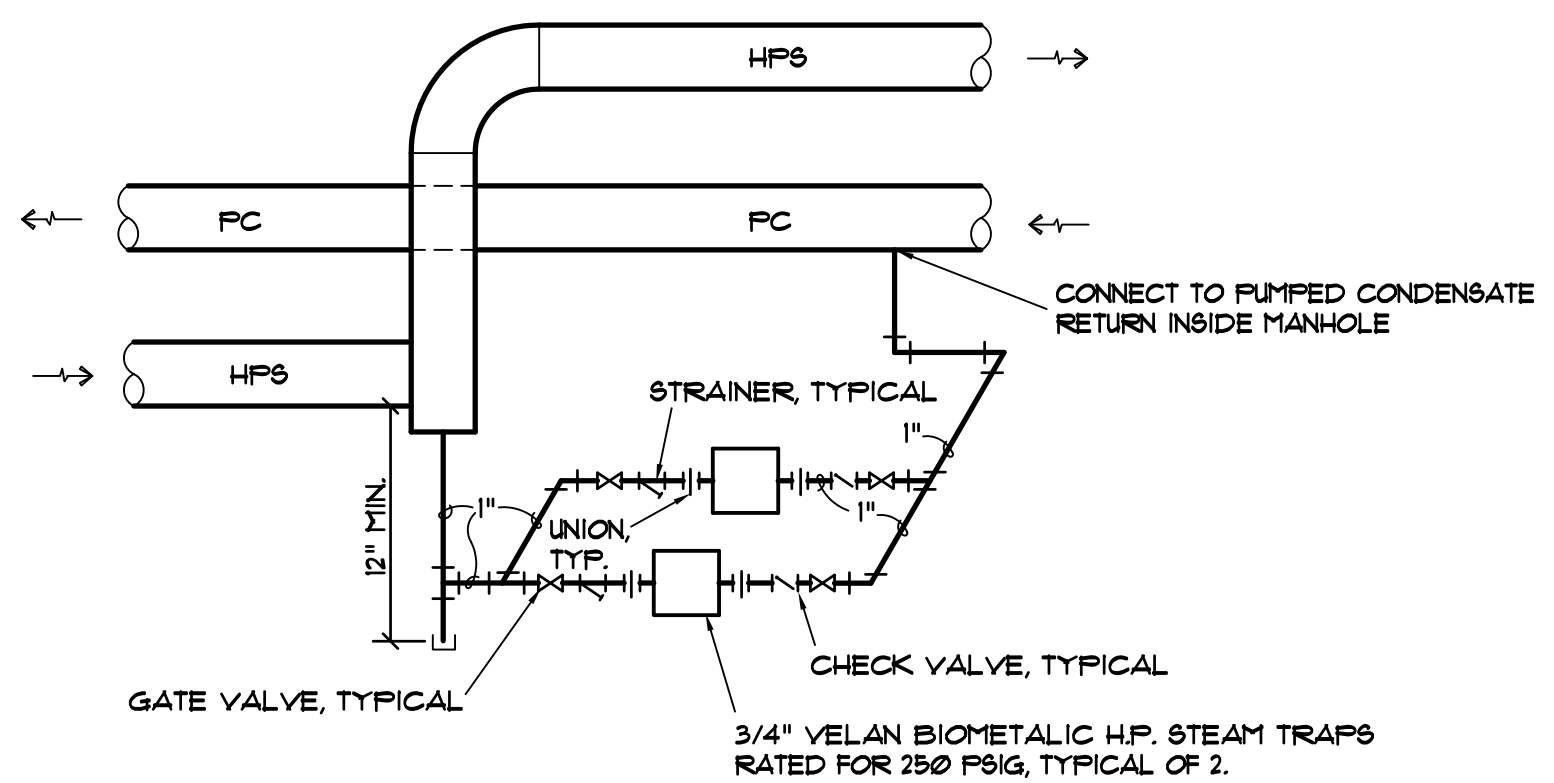
NOTE:
INCREASE EXISTING PIPE PENETRATIONS AS REQUIRED FOR LARGER PIPES AND INCREASED INSULATION THICKNESSES. SEE SPECIFICATIONS FOR PIPE INSULATION AND COVERING.



PIPE ANCHOR DETAIL

NOT TO SCALE
NOTE: ANCHORS SHALL BE WITHIN 36" OF MANHOLES AND HAND HOLES.

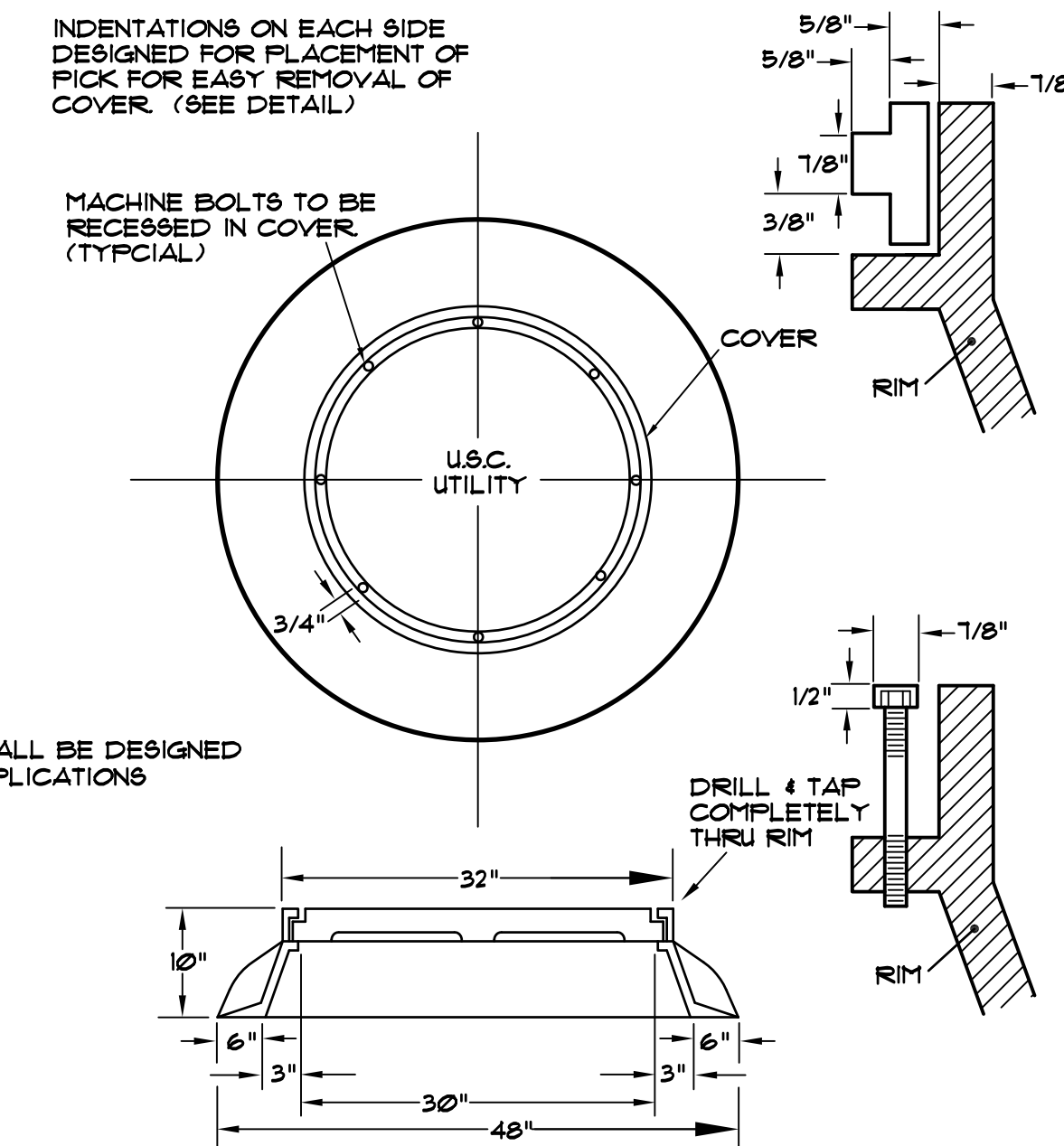
STEAM/PUMPED COND.	PLATE SIZE	W	H
8" HPS/4" PC	46"W x 24"H	58"	36"
8" HPS	26"W x 24"H	38"	36"
4" PC	20"W x 24"H	32"	36"



HIGH PRESSURE STEAM DRIP
SCHEMATIC

HAND HOLE RING NOTES

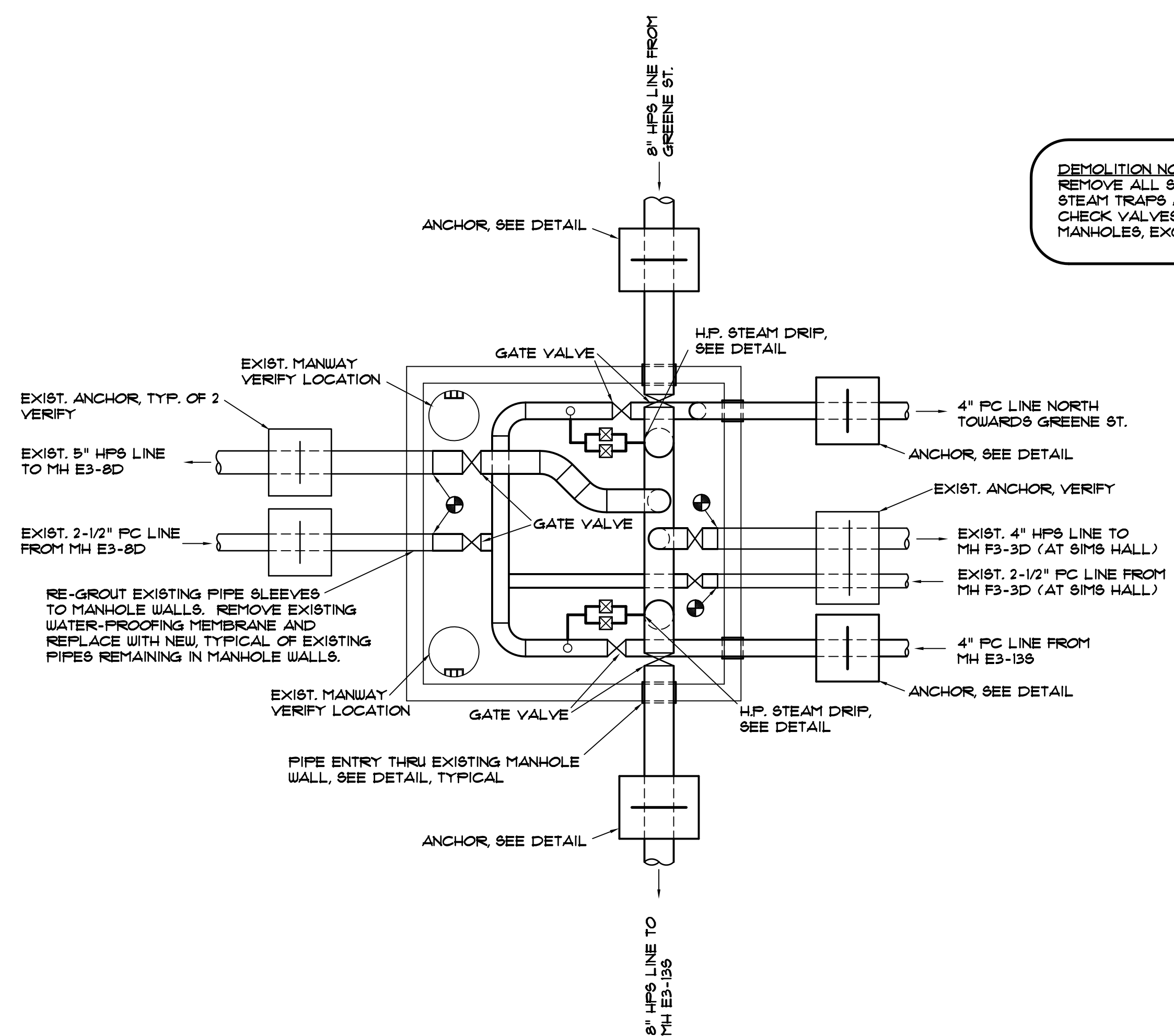
1. RING AND COVER SHALL BE KEYED FOR ALIGNMENT.
2. SECURE TOP WITH 6 3/4"X REQUIRED LENGTH BRASS MACHINE BOLTS.
3. MINIMUM WEIGHT 115 POUNDS, RING & COVER.
4. EAST JORDAN IRON WORKS CAT. #825.
5. ACCESS COVER ELEVATION SHALL BE ADJUSTABLE.



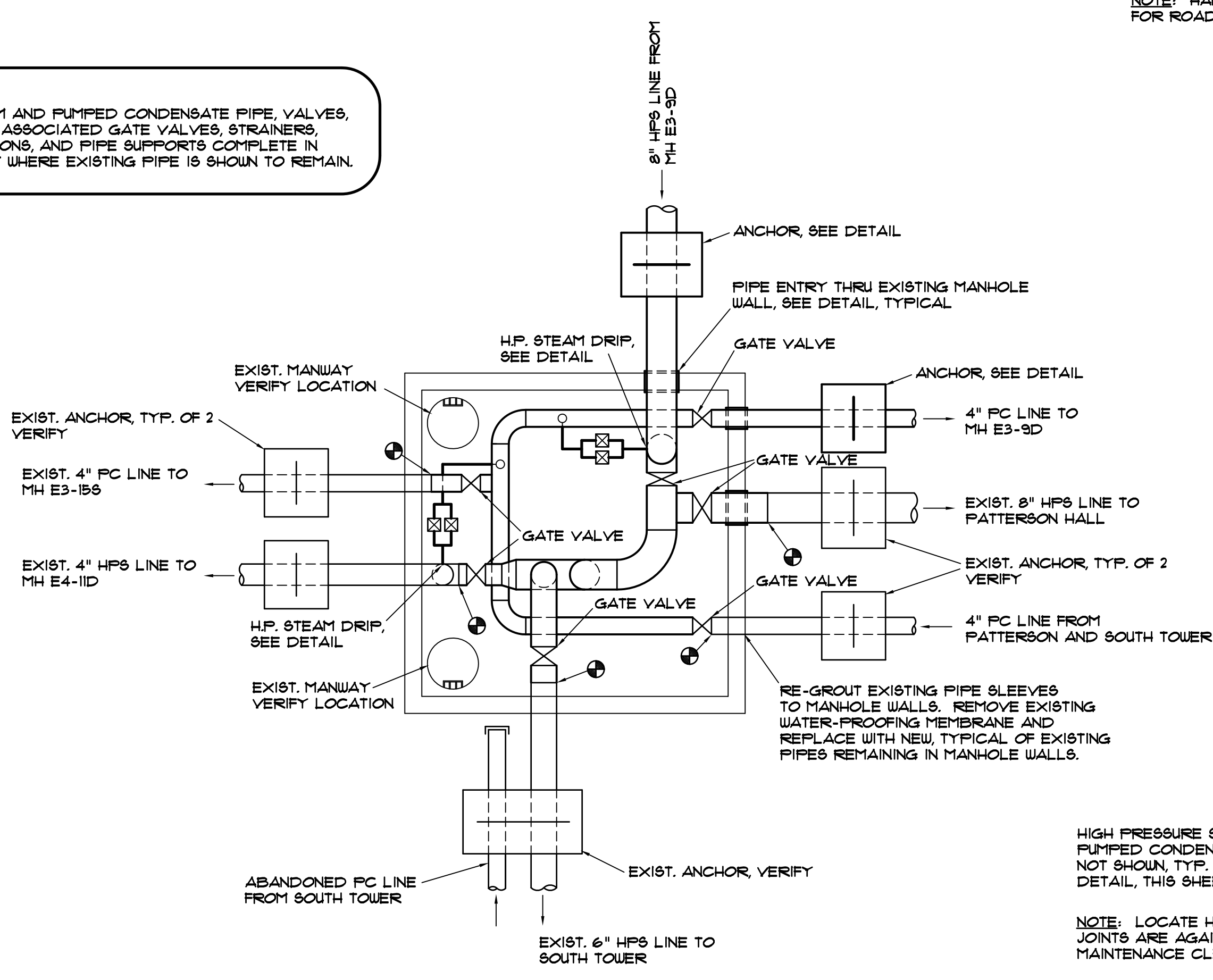
HAND HOLE RING & COVER
NOT TO SCALE

NOTE: HAND HOLES SHALL BE DESIGNED FOR ROAD TRAFFIC APPLICATIONS

DEMOLITION NOTE:
REMOVE ALL STEAM AND PUMPED CONDENSATE PIPE, VALVES, STEAM TRAPS AND ASSOCIATED GATE VALVES, STRAINERS, CHECK VALVES, UNIONS, AND PIPE SUPPORTS COMPLETE IN MANHOLES, EXCEPT WHERE EXISTING PIPE IS SHOWN TO REMAIN.



EXISTING MANHOLE E3-9D DETAIL
SCALE: 1/4" = 1'-0"



EXISTING MANHOLE E3-135 DETAIL
SCALE: 1/4" = 1'-0"

HIGH PRESSURE STEAM INLET, TYP. OF 2. PUMPED CONDENSATE INLET ADJACENT, NOT SHOWN, TYP. OF 2. SEE PIPE ENTRY DETAIL, THIS SHEET.

NOTE: LOCATE HAND HOLE SO EXPANSION JOINTS ARE AGAINST WALL FOR MAXIMUM MAINTENANCE CLEARANCE.

EXPANSION JOINT HAND HOLE DETAIL
NOT TO SCALE

MECHANICAL DESIGN INC.
4403 Broad River Road
Columbia, S.C. 29210
(803) 731-9834
(803) 731-9837 FAX
CONTACT: Danny Wilds
DATE: 10/10/13 COMM. NO. 133030